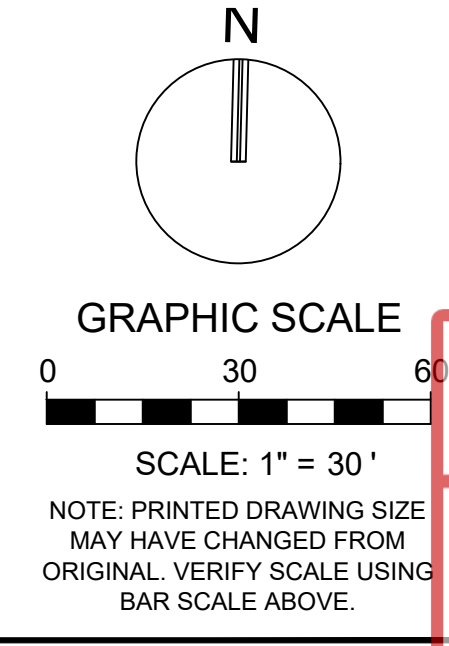


IRRIGATION SCHEDULE	
SYMBOL	MANUFACTURER/MODEL/DESCRIPTION
	RAIN BIRD 1806-PRS 15 STRIP SERIES SHRUB SPRAY 6IN. POP-UP SPRINKLER WITH CO-MOLDED WIPER SEAL. SIDE AND BOTTOM INLET. 1/2IN. NPT FEMALE THREADED INLET. WITH PRESSURE REGULATING DEVICE.
	RAIN BIRD 1806-PRS 8 SERIES MPR SHRUB SPRAY 6IN. POP-UP SPRINKLER WITH CO-MOLDED WIPER SEAL. SIDE AND BOTTOM INLET. 1/2IN. NPT FEMALE THREADED INLET. WITH PRESSURE REGULATING DEVICE.
	RAIN BIRD 1806-PRS 10 SERIES MPR SHRUB SPRAY 6IN. POP-UP SPRINKLER WITH CO-MOLDED WIPER SEAL. SIDE AND BOTTOM INLET. 1/2IN. NPT FEMALE THREADED INLET. WITH PRESSURE REGULATING DEVICE.
	RAIN BIRD 1806-PRS 12 SERIES MPR SHRUB SPRAY 6IN. POP-UP SPRINKLER WITH CO-MOLDED WIPER SEAL. SIDE AND BOTTOM INLET. 1/2IN. NPT FEMALE THREADED INLET. WITH PRESSURE REGULATING DEVICE.
	RAIN BIRD 1806-PRS 16 SERIES MPR SHRUB SPRAY 6IN. POP-UP SPRINKLER WITH CO-MOLDED WIPER SEAL. SIDE AND BOTTOM INLET. 1/2IN. NPT FEMALE THREADED INLET. WITH PRESSURE REGULATING DEVICE.
	RAIN BIRD 1806-PRS ADJ SHRUB SPRAY 6IN. POP-UP SPRINKLER WITH CO-MOLDED WIPER SEAL. SIDE AND BOTTOM INLET. 1/2IN. NPT FEMALE THREADED INLET. WITH PRESSURE REGULATING DEVICE.
	RAIN BIRD 1800-1300AF FLOOD ADJUSTABLE FLOW 1.0 GPM - 2.3 GPM, FULL CIRCLE BUBBLER, 1/2IN. FIPT INLET.
SYMBOL	MANUFACTURER/MODEL/DESCRIPTION
	RAIN BIRD 3504-PC 0.75 TURF ROTOR, 4IN. POP-UP. ADJUSTABLE AND FULL CIRCLE.
	RAIN BIRD 3504-PC 1.0 TURF ROTOR, 4IN. POP-UP. ADJUSTABLE AND FULL CIRCLE.
	RAIN BIRD 3504-PC 1.5 TURF ROTOR, 4IN. POP-UP. ADJUSTABLE AND FULL CIRCLE.
	RAIN BIRD 3504-PC 2.0 TURF ROTOR, 4IN. POP-UP. ADJUSTABLE AND FULL CIRCLE.
	RAIN BIRD 3504-PC 3.0 TURF ROTOR, 4IN. POP-UP. ADJUSTABLE AND FULL CIRCLE.
	RAIN BIRD 3504-PC 4.0 TURF ROTOR, 4IN. POP-UP. ADJUSTABLE AND FULL CIRCLE.
	RAIN BIRD 8005 18 TURF ROTOR, 5.0IN. POP-UP, PLASTIC RISER, STANDARD NOZZLE. WITH SEAL-A-MATIC CHECK VALVE, ADJUSTABLE 50-330 ARC, AND 360 NON-REVERSING FULL-CIRCLE. 1IN. (26/34) NPT FEMALE THREADED INLET. EXTENDED RADIUS IS IDEAL FOR LARGE TURF APPLICATIONS.
SYMBOL	MANUFACTURER/MODEL/DESCRIPTION
	WATER METER 3"
	IRRIGATION LATERAL LINE: PVC CLASS 160 SDR 26
	SYSTEM PIPE SIZE 3/4" SHALL BE CLASS 200 PVC; SYSTEM PIPE SIZE 1" OR GREATER SHALL BE CLASS 160 PVC.
	IRRIGATION MAINLINE: PVC SCHEDULE 40

- NOTES:
- ALL SOD AND LANDSCAPE TO RECEIVE 100% COVERAGE WITH 100% OVERLAP FROM AN AUTOMATIC IRRIGATION SYSTEM USING AN APPROVED WATER SOURCE.
  - A RAIN SENSOR MUST BE INSTALLED TO OVER-RIDE THE CONTROLLER.
  - BUBBLERS TO BE PROVIDED FOR NEW AND RELOCATED TREES AND PALMS.
  - CONTRACTOR IS RESPONSIBLE FOR ALL CONDITIONS AND IRRIGATION SPECIFICATION ATTACHED TO THIS PLAN. PLAN AND SPECIFICATIONS SHALL BE CONSIDERED CONTRACT DOCUMENTS.
  - INVESTIGATE TO DETERMINE AND VERIFY THE LOCATION OF UNDERGROUND UTILITIES BEFORE EXCAVATION.
  - REFER TO SHEET LI-501 FOR ADDITIONAL IRRIGATION SPECIFICATIONS AND DETAILS.
  - NOZZLE SELECTION BASED ON COVERAGE REQUIREMENTS.



301 East Atlantic Blvd.  
Pompano Beach, FL 33060  
PH: (954) 788-3400

Florida Engineering Business License: CA7928  
Florida Surveyor and Mapper Business License: LB6860  
Florida Landscape Architecture Business License: LC26000457

REVISIONS		
NO.	DESCRIPTION	DATE

**PRELIMINARY PLAN**  
**NOT FOR CONSTRUCTION**

THESE PLANS ARE NOT FULLY PERMITTED AND ARE SUBJECT TO REVISIONS MADE DURING THE PERMITTING PROCESS.

RESPONSIBILITY FOR THE USE OF THESE PLANS PRIOR TO OBTAINING PERMITS FROM ALL AGENCIES HAVING JURISDICTION OVER THE PROJECT WILL FALL SOLELY UPON THE USER.

ISSUE DATE: 10/15/2025  
DESIGNED BY: KU, SL  
DRAWN BY: KU, GM  
CHECKED BY: KU, KS  
BID-CONTRACT:

PAUL H. WEINBERG, PLA  
FLORIDA REG. NO. LA666804  
(FOR THE FIRM)

CLIENT

**FIRST INDUSTRIAL**

PROJECT

**FIRST 95 DISTRIBUTION CENTER- PHASE II**  
1000-1041 NW 12th Ter.  
Pompano Beach, FL

SHEET TITLE

**IRRIGATION PLAN**

**PZB**

SHEET NUMBER LI-101  
PROJECT NUMBER PZ25-129000030  
DATE 01/28/2026

STATUS: PRELIMINARY

Drawing name: Q:\10007.14 - First 95 Distribution Center - PH 2 - First Industrial\Landscape Architecture\CAD\10007.14 - LI-1XX.dwg  
Plotted by: Kurena On 12/1/2025 10:28 AM